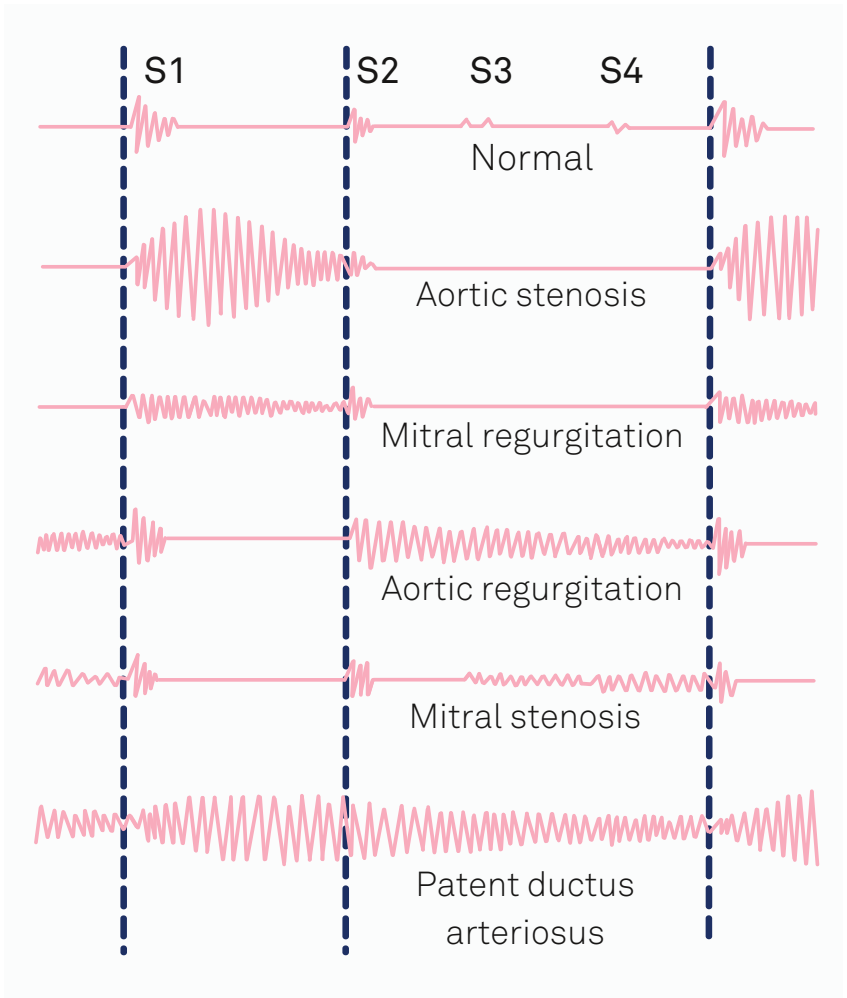
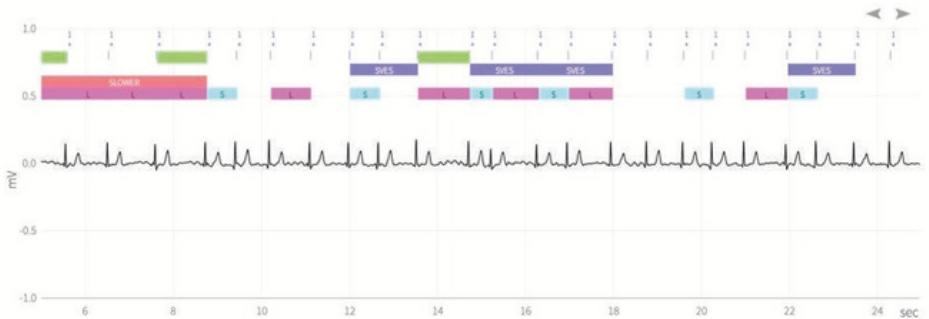


HEART SOUNDS



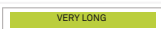
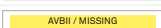
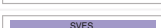
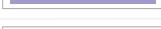
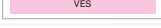
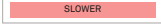
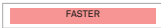
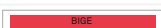



PORTAL AUTOMATED ECG ANNOTATION



Annotation

Meaning Description

	Short beat Shorter R-R interval than other beats.
	Long beat Longer R-R interval than other beats.
	Very long beat Much longer R-R interval than other beats.
	AV-block/missed beat AV-block type II or completely missed beat.
	SVES/PAC Supra-ventricular extra beat.
	VES/PVC Ventricular extra beat.
	Slower Sudden slower series of beats than the rest.
	Faster Sudden faster series of beats than the rest.
	Bigeminy* Twin Rhythm
	Trigeminy* Triplet Rhythm
	Trigeminy* Triplet Rhythm

*DISCLAIMER: EXTENDED AUTOMATIC ARRHYTHMIA DETECTION CAPABILITIES ARE AVAILABLE TO SUPPORT REMOTE PATIENT MONITORING DURING COVID-19 PUBLIC HEALTH EMERGENCY, AS PER THE FDA 2020-D-1138-0001 GUIDANCE, HENCE NOT FDA CLEARED INDICATIONS, AND THESE INDICATIONS SHOULD BE USED IN AN ADJUNCTIVE MANNER, NOT AS A PRIMARY MEANS TO MAKE DIAGNOSIS, PREVENTION, OR TREATMENT RECOMMENDATIONS.